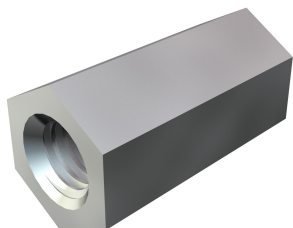


Technical data sheet

Spacer sleeve

Item number: 3415066



Continuous internal thread.

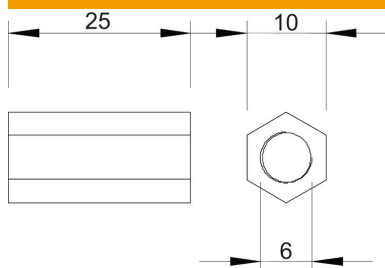
CE

| | |
|----|-------------------|
| Zn | Die-cast zinc |
| G | Electrogalvanized |

Master data

| | |
|---------------------|----------------------------|
| Item number | 3415066 |
| Type | 965 M6X25 G |
| Description 1 | Spacer sleeve |
| Manufacturer | OBO |
| Dimension | M6x25mm |
| Material | Die-cast zinc |
| Surface | Electrogalvanized |
| Surface standard | EN ISO 19598 / EN ISO 4042 |
| Smallest sales unit | 100 |
| Unit of quantity | Piece |
| Weight | 0.96 kg |
| Weight unit | kg/100 pc. |

Dimensions



| | |
|---------------------|-------|
| Length | 25 mm |
| Dimension 1, metric | 6 |
| Dimension 2, metric | 6 |
| Dimension L | 25 mm |

Technical data sheet

Spacer sleeve

Item number: 3415066



Technical data

| | |
|-------------------|-----------|
| Continuous thread | yes |
| Shape | Hexagonal |
| Thread | M6 |
| WAF | 10 |
| Hexagonal | yes |