

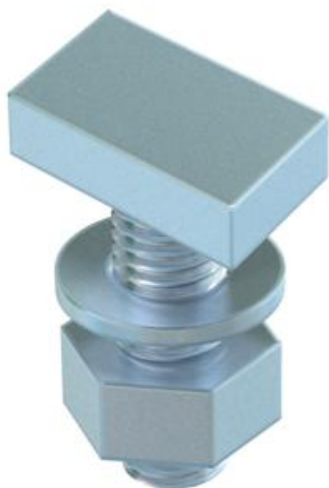
Technical data sheet

Hammer-head bolt

Item number: 1148008



Hammer-head bolt for use with CL2008 profile rail



St Steel

ZL Zinc slat

Master data

Item number	1148008
Type	CL20HB M5x25 ZL
Description 1	Hammerhead screw
Description 2	for profile rail CL2008
Manufacturer	OBO
Dimension	M5x25mm
Material	Steel
Surface	Zinc slat
Surface standard	
Smallest sales unit	50
Unit of quantity	Piece
Weight	1.1 kg
Weight unit	kg/100 pc.

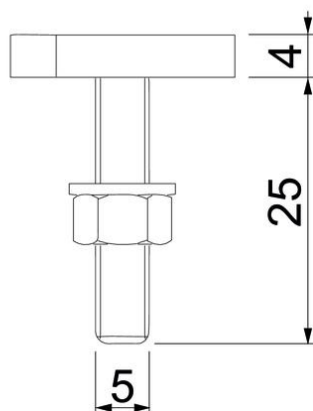
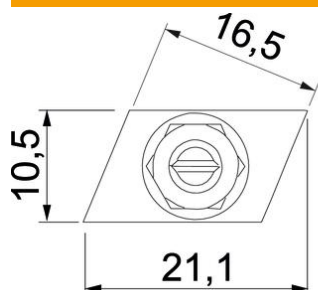
Technical data sheet

Hammer-head bolt

Item number: 1148008



Dimensions



Length	21.1 mm
Width	10.5 mm
Height	4 mm
Dimension L	25 mm

Technical data

Suitable for mounting rail	yes
Thread	M 5 x 25mm
Thread metric	5