

Technical data sheet

TP wall and ceiling bracket

Item no. 6363806



TP wall and ceiling bracket for universal use.

Important! If the wall and ceiling bracket is fixed directly to the wall or ceiling, then, for reasons of stability, always use the spacer, type DS 4.

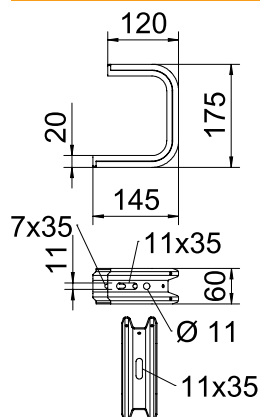


St	Steel
FS	Strip galvanised

Master data

Item no.	6363806
Type	TPD 145 FS
Description 1	Wall and ceiling bracket
Description 2	TP profile
Dimension	B145mm
Material	Steel
Material symbol	St
Surface	Strip galvanised
Surface to DIN	DIN EN 10346
Surface symbol	FS
Smallest sales unit (VG)	1 Piece
Weight	48,00 kg/100 pc.

Technical data



Length	145,00 mm
Width	145,00 mm
Dimension B	145,00 mm
Dimension H	175,00 mm
Version	Suspension bracket (C clamp)
F in ceiling	1,30 kN
F in kN wall	1,40 kN
for width	100,00 mm
Suitable for tray/ladder width	100,00 mm
Suitable for maintaining electrical function	<input type="checkbox"/>
Suitable for cable tray	<input checked="" type="checkbox"/>
Suitable for cable ladder	<input checked="" type="checkbox"/>
Suitable for mesh cable tray	<input checked="" type="checkbox"/>
Adjustable	<input type="checkbox"/>

Appr. load:

Anchor, approved F 1.65	1,65 kN
-------------------------	---------

Technical data sheet

TP wall and ceiling bracket

Item no. 6363806



Technical data

Appr. load:

Anchor, approved F 3.57 | 3,57 kN

Technical data sheet

TP wall and ceiling bracket

Item no. 6363806



Technical data

Appr. load:

Technical data sheet

TP wall and ceiling bracket

Item no. 6363806



Technical data

Appr. load: