

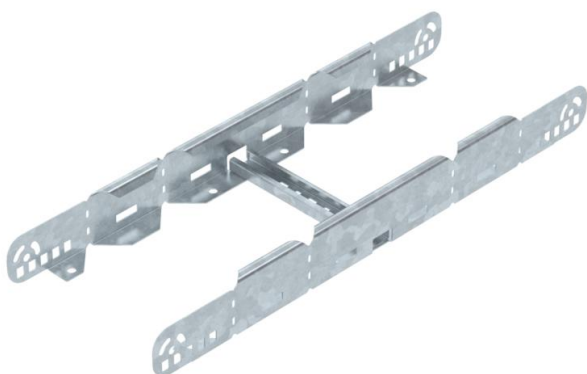
# Technical data sheet

## Multifunctional connector FT

Item number: 6225730



Multifunctional connector for joining cable ladders with a side height of 60 mm. Symmetrical and asymmetrical reductions, infinitely-adjustable bends between 0–60° and add-on tees can be created.



**St** Steel

**FT** Hot-dip galvanised

### Master data

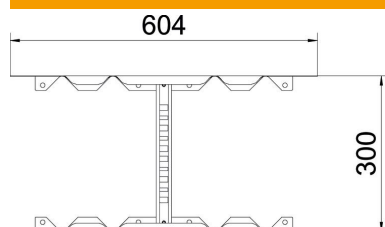
Item number	6225730
Type	LMFV 620 FT
Description 1	Multifunctional connector
Description 2	for cable ladder
Manufacturer	OBO
Dimension	60x200
Material	Steel
Surface	Hot-dip galvanised
Surface standard	DIN EN ISO 1461
Smallest sales unit	1
Unit of quantity	Piece
Weight	130.6 kg
Weight unit	kg/100 pc.

# Technical data sheet

## Multifunctional connector FT

Item number: 6225730

### Dimensions



Length	604 mm
Width	200 mm
Height	60 mm
Plate thickness	1.5 mm
Dimension B	200 mm

### Technical data

Version for	Straight and angle connector
Maintain electrical functions	no
Suitable for mesh cable tray	no
Suitable for cable ladder	yes
Suitable for cable tray	no
Suitable for cable support system width, max.	200 mm
Suitable for cable support system width, min.	200 mm
Suitable for cable tray system height	60 mm
Adjustable connector, horizontal	no
Articulated connector, vertical	no
Rustproof steel, pickled	no
Connection type	Screw connector