

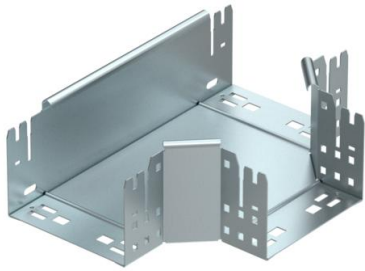
Technical data sheet

Magic tee 110 FS

Item number: 6042011



Tee with quick connector system. For all cable tray types of 110 mm side height.



- St** Steel
- FS** Strip galvanized

Master data

| | |
|---------------------|----------------------|
| Item number | 6042011 |
| Type | RTM 115 FS |
| Description 1 | T-branch piece |
| Description 2 | with quick connector |
| Manufacturer | OBO |
| Dimension | 110x150 |
| Material | Steel |
| Surface | Strip galvanized |
| Surface standard | DIN EN 10346 |
| Smallest sales unit | 1 |
| Unit of quantity | Piece |
| Weight | 147.2 kg |
| Weight unit | kg/100 pc. |

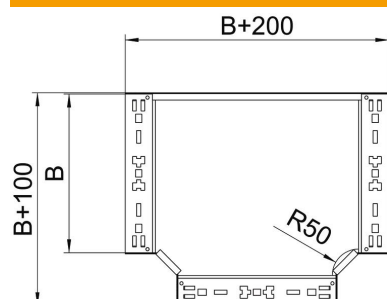
Technical data sheet

Magic tee 110 FS

Item number: 6042011



Dimensions



| | |
|-------------|--------|
| Width | 150 mm |
| Height | 110 mm |
| Dimension B | 150 mm |

Technical data

| | |
|---|----------------------|
| Bend (angle) | 90° |
| Connector version | Integrated connector |
| Maintain electrical functions | no |
| NATO hole pattern | no |
| Change of direction | Horizontal |
| Rustproof steel, pickled | no |
| Wide-span version | no |
| Type of connector, cable support system | Screwed |
| Rail thickness | 1.25 mm |