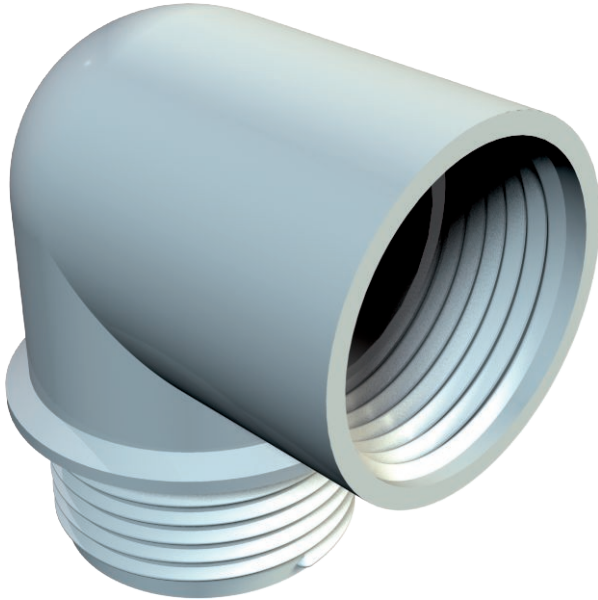


Technical data sheet

90° elbow socket, PG thread

Item no. 2029936



Elbow socket with PG internal and external thread to DIN 40430.
The elbow socket can be turned into an angular gland with two steel pressure rings 107/D, a sealing ring 107/A or 107/B and a pressure screw 107/E.

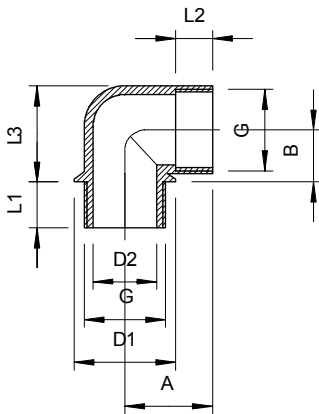


PA Polyamide

Master data

Item no.	2029936
Type	107 W PG13.5 PA
Description 1	Elbow socket
Dimension	PG13,5
Colour	Light grey
Material	Polyamide
Material symbol	PA
Smallest sales unit (VG)	10 Piece
Weight	0,75 kg/100 pc.

Technical data



Dimension A	22,00 mm
Dimension B	13,00 mm
Dimension D1	25,50 mm
Dimension D2	16,00 mm
Dimension L1	11,50 mm
Dimension L2	10,00 mm
Dimension L3	24,00 mm
Shape	with thread
Flame-resistant	acc. to VDE 0471/DIN 695 Part 2-1, test temperature 650°C
Thread	Pg 13,5
Thread dimension, PG, external	13,5
Thread dimension, PG, internal	13,5
max. permitted ambient temperature	-20,00 - 65,00 °C